

## ► Search Radar Console

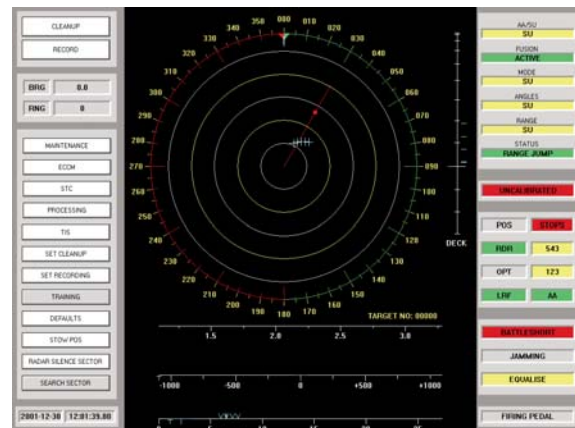
The Search Radar Console (SRC) provides a sophisticated graphically-orientated human-machine interface for the Surveillance Radar Segment (SRS). It allows for the display of a number of radar sensors, including I-band, F-band and X-band radars in both 2D and 3D formats. The SRC displays IFF generated data in various IFF modes as well as allowing for the control of the IFF transponder and interrogator functions.

Additionally, the SRC provides operator controls and setup features to operate the various radar sensors connected to the SRC.

### Features

The features of SRC are as follows :

- Display of Primary Search Radar data in 2D and/or 3D data formats
- Display of IFF Radar data
- Display of Navigation Radar data
- Display of externally generated contact data
- Display of emission control zones
- Missile Totes
- Missile Detection
- Missile Control
- Helicopter Control
- Tote display for contacts
- Tote display for air control
- Air Controller functionality
- Display of air control constructs
- IFF Interrogator functionality
- Control of IFF Transponder
- High-resolution graphics displays
- High-speed synthetic graphics
- Networked display system
- On-line health monitoring
- Built-in self-tests



### Design

A standardised Versatile Modular Console (VMC) designed for the SA Navy is used for the SRC. The SRC Computer Software Configuration Item (CSCI) is being developed by C<sup>2</sup>I<sup>2</sup> Systems (Pty) Ltd.

The software is designed using the latest in Object-Orientated Design (OOD) methodologies and implemented using a Object-Orientated Programming (OOP) language. The computing segment of the SRC uses an embedded Multibus II platform, with Multibus II Pentium processor cards. The host operating system is Windows NT V4, which provides high-speed graphics and fail-safe operation. The SRC interfaces to other sub-systems using an FDDI local area network, employing the real-time transport protocol XTP.



## ► Search Radar Console

### Graphics

The SRC uses one of the fastest commercially-available graphics processors to achieve its high graphics performance requirements. The SRC provides very responsive operator interaction.

### Applications

- Naval Surveillance Radar Displays
- Air Defence Search Radar Displays
- Designation Radar Displays
- Air Controller Displays for air asset control and direction
- Helicopter Control

| Specifications |   |
|----------------|---|
| Height         | 1 600 mm  |
| Width          | 670 mm  |
| Depth          | 600 mm  |
| Desk Depth     | 600 mm  |
| Display        | 2 x 20" CRTs  |
| Resolution     | 1 280 x 1 024 pixels  |
| Colours        | 256   |
| Processors     | 2 x Pentium 200 MHz<br>2 x S3 Trio64 Graphics Cards   |
| Networking     | 1 x 100 Mbps FDDI PMC Adapter   |
| MMI Controls   | 1 x Qwerty keyboard<br>1 x trackball<br>1 x 16-way numeric keys<br>1 x 4-way cursor keys<br>2 x 6 x 4-way softkeys for CRTs |